

# Photometric Report



## General Information

Report No. RN-160610-4  
Test date 2016-06-10  
Operator mw Han  
Temperature 22.6 °C  
Test Name 160610\_FT-WL-3500-F  
Description

## Sample Information

Measuring Distance 25.00 m  
C (°) 0° ~ 350° / 10.0°  
γ (°) 0° ~ 90° / 0.5°

## Electric Properties

Voltage 24.00 V  
Current 1.497 A

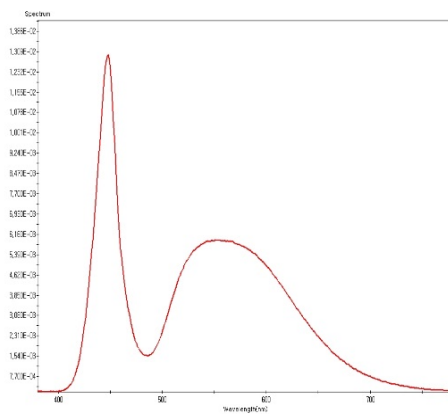
## Photometric

Total Luminous Flux 2194.51 lm  
Luminance Efficiency 61.07 lm/W  
Max. Intensity 3645.80 cd

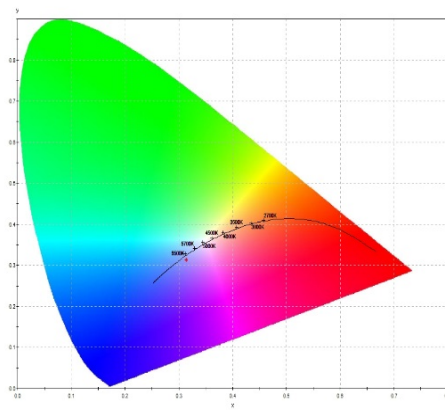
## Colorimetric

x (CIE 1931) 0.3133  
y (CIE 1931) 0.3143  
Color Temperature 6594.0 k

## Spectrum



## Color Coordinate



Report Number:

Report Date:

Part Name: 160610\_FT-WL-3500-F

Customer:

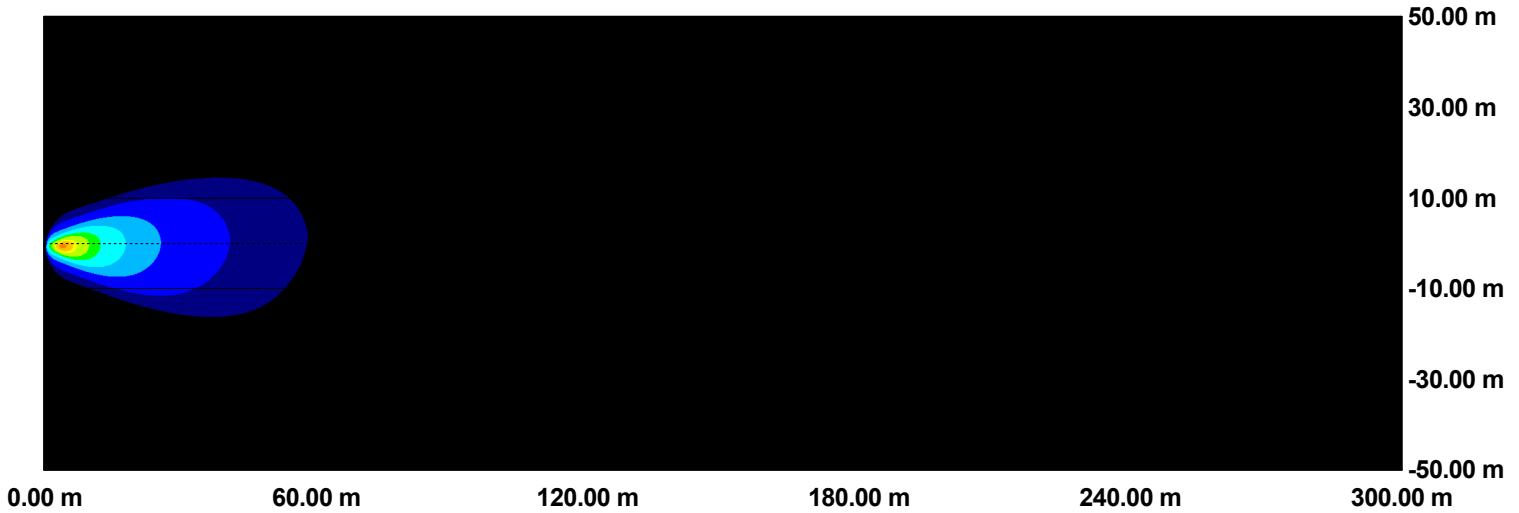
Part Number:

E<sub>max</sub> (Lux): 86.617

Model:

Coordinate: 4.104, -0.087

## 160610\_FT-WL-3500-F



Illuminance Type: *Perpendicular*  
Test Item Tilt Angle (?): 0.000

Test Item Height (m): 1.700  
Test Item Offset from Road Centre (m): 0.600

Tested By: \_\_\_\_\_ Checked By: \_\_\_\_\_ Approved By: \_\_\_\_\_