



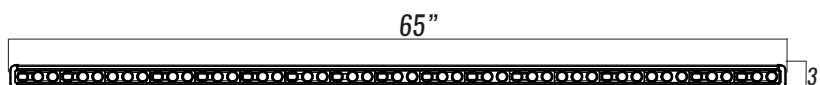
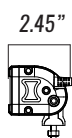
65" BROW LIGHT

FT-B-65-ML3 (3 MARKER LIGHTS)

ABOUT THE BROW LIGHT

Available with optional integrated DOT marker lights and split circuits, this product is the first fixture specifically designed from the ground up for use on the front of an apparatus cab to illuminate the roadway. One of the secrets to the brow lights success is the ability to attach the light at multiple points along the extrusion. This patented, adjustable rail mounting system allows the FireTech brow light to be attached more securely to the apparatus. This means that over time, it will not flex and succumb to moisture intrusion. The FireTech brow light's extreme reliability and proven track record is why it is the ultimate lighting solution for forward facing scene lighting.

DIMENSIONS



PART#: FT-B-65-ML3-*

RAW LUMENS	26,328
EFFECTIVE LUMENS	18,429.6
WATTAGE	249W
TOTAL AMPERAGE	20.75A @12V DC
CIRCUIT 1 (SPOT) AMPERAGE	5.0A @12V DC
CIRCUIT 2 (SCENE) AMPERAGE	7.5A @12V DC
CIRCUIT 3 (FLOOD) AMPERAGE	7.5A @12V DC
CIRCUIT 4 (MARKER) AMPERAGE	0.75A @12V DC
INPUT VOLTAGE	9-32V DC

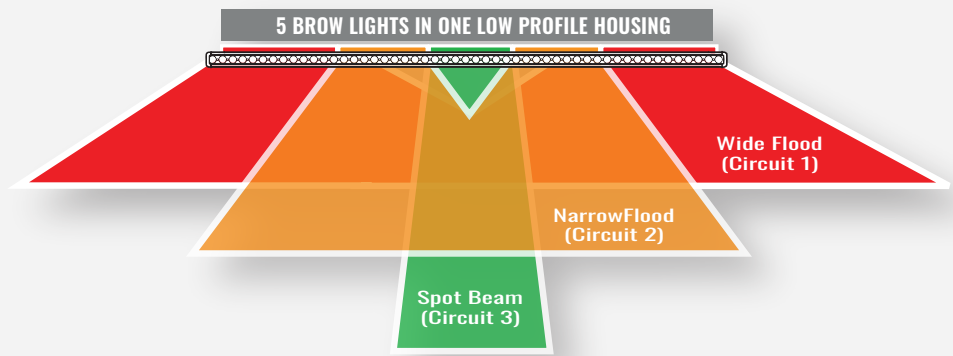


KEY FEATURES:

- 5W LEDs with Precision Acrylic Optics
- All Aluminum Extrusion
- Multiple Mounting Options
- Split Circuit Optic control

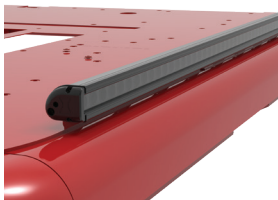
DOMINATE THE SCENE WITH FIVE LIGHTS IN ONE

FireTech brow lights give you the right type of lighting for the leading edge of your apparatus cab. By combining a long distance spot beam with multiple flood beams, your apparatus will have both range and coverage.



Model / Order Number	Description	Raw Lumens	Effective Lumens	Wattage	Amperage @12v DC	Beam Pattern	Length	# of Mounting Feet
FT-B-65-ML3-B	65" Brow Light. 51 LEDs. 5 Watt chip sets. 3 integrated marker lights, 4 circuits. Black housing.	26,328	18,429.6	249W	21.3A	Spot, Flood, Scene,	65"	9
FT-B-65-ML3-W	65" Brow Light. 51 LEDs. 5 Watt chip sets. 3 integrated marker lights, 4 circuits. White housing.	26,328	18,429.6	249W	21.3A	Spot, Flood, Scene,	65"	9

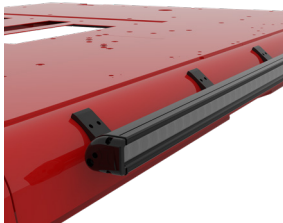
INCLUDED MOUNTING ACCESSORY



PEDESTAL MOUNTING FEET

Included with fixture

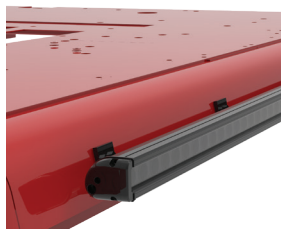
OPTIONAL MOUNTING ACCESSORIES



CAB MOUNTING BRACKET | 3" RADIUS SURFACE

WHITE: P-MB-R3V2FOOT-W

BLACK: P-MB-R3V2FOOT-B



L-FOOT BRACKET | VERTICAL SURFACE

WHITE: P-MB-LFOOT-W

BLACK: P-MB-LFOOT-B

