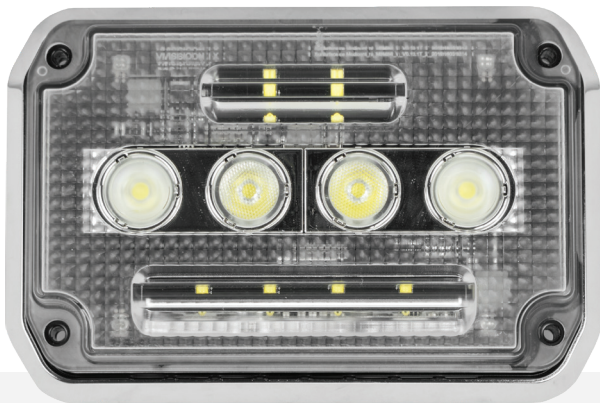


GUARDIAN[®] JR SCENE LIGHT

FT-GSMJR-*



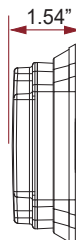
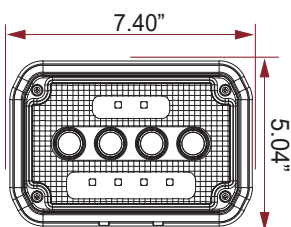
KEY FEATURES:

- Industry Standard Bolt Pattern
- Multiple Output Options
- Hardware Never Makes Contact with Lens

GUARDIAN JUNIOR SURFACE MOUNTED SCENE LIGHT

The Guardian Junior is a class leading scene light designed for the side of your apparatus. It is 3x brighter than any fixture of its size and uses an industry standard bolt pattern. These two key features make it the perfect scene light for retrofits and new installations alike.

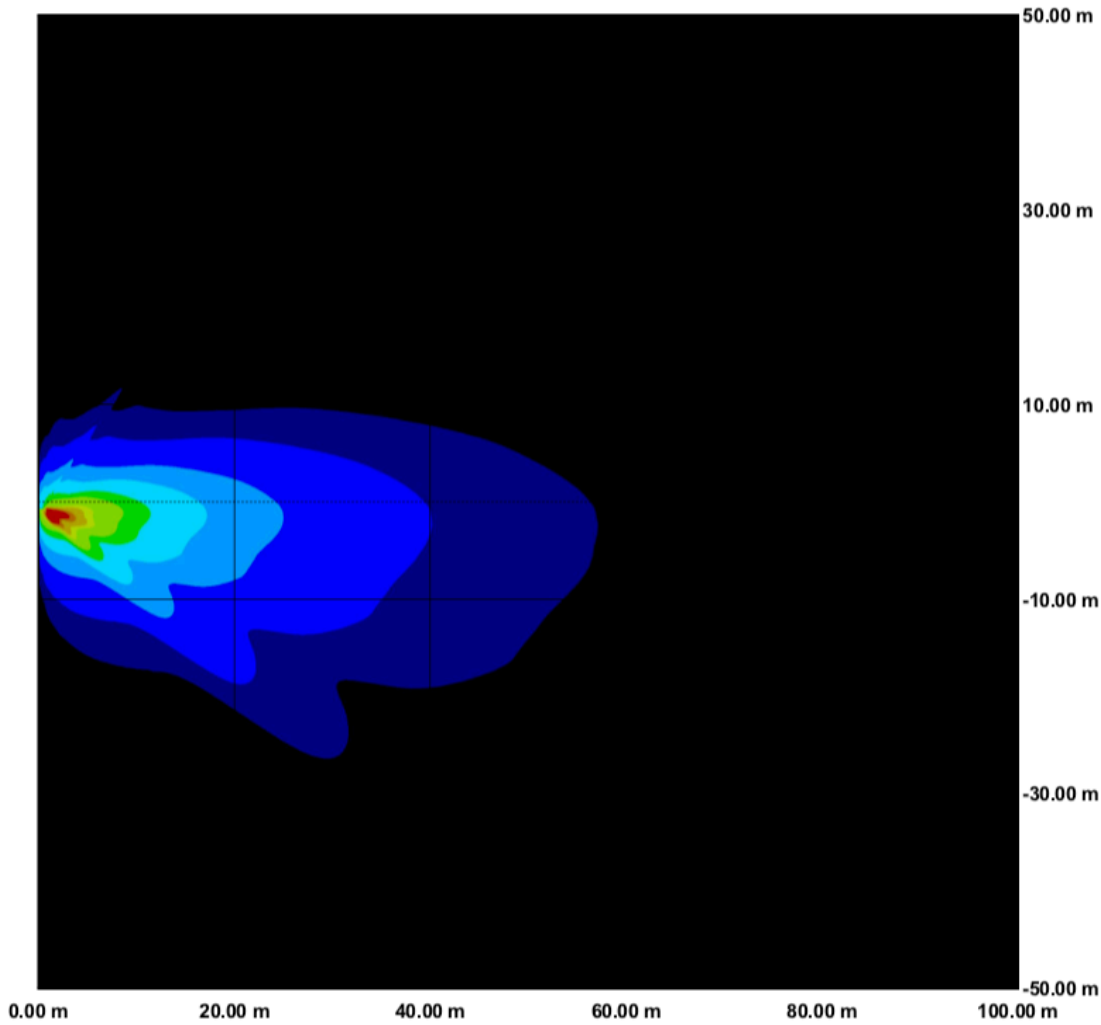
DIMENSIONS



PART#: FT-GSMJR-*

RAW LUMENS	5,000
EFFECTIVE LUMENS	3,125
WATTAGE	35W
AMP DRAW (@12V)	3.33A
INPUT VOLTAGE DC	9-32V DC

LUMINOUS INTENSITY



FT-GSMJR DETAILS

Model / Order Number	Description	Raw Lumens	Effective Lumens	Watts	Amp Draw (@12V)	Voltage Range
FT-GSMJR	Guardian LED Surface Mount with Gasket. Chrome Bezel.	5,000	3,125	35W	3.33A	9-32V DC
FT-GSMJR-B	Guardian LED Surface Mount with Gasket. Black Bezel.	5,000	3,125	35W	3.33A	9-32V DC

