



LASER CANNON INSTRUCTION MANUAL

FireTech Specialty Light

FT-LZC2-4-B



HiViz LED Lighting
HiViz Lighting, Inc
Phone: 703-662-3458
Email: firetech@hizleds.com
PO Box 565, Naples, NC 28760



TABLE OF CONTENTS

Laser Notice.....3

General Safety Regulations & Warranty.....4

What's Included5

Technical Specifications6

Wiring Information7

Installation Instructions8

Accessories & Replacements8

References8



NOTICE

CAUTION – use of controls or adjustments, or performance of procedures other than those contained in the operation, maintenance or any other manual provided with this product, may result in hazardous radiation exposure.

This product is certified as a CLASS 3R laser product to the requirements of the US Federal Product Performance Standard for Laser Products contained in the regulations in 21 CFR Subchapter J except for specific deviations described in FDA Laser Notice #56. This laser product is intended to be used in a locale where the emitted laser radiation is unlikely to be viewed with optical instruments. As such, per 1040.10(e), optically aided viewing was not considered when classifying the product.

This Class 3R laser product can be hazardous when direct eye exposure occurs. The hazards are increased if optically aided viewing does occur. Avoid direct eye exposure or view with telescopic optics (binoculars or telescope).

NOTE: This laser product has an extended source, which allows higher levels of laser radiation than are normally allowed with a traditional laser beam. The Class 3R limit for this extended source is 60 mW when determined 10 cm beyond the external beam waist.

UNDER NO CIRCUMSTANCE shall attempts be made to view the laser with telescopic optics.

The product is not field serviceable. Contact FIRETECH for repair or replacement information.

Labels: The following warning labels are affixed to the exterior of the product housing.

HAZARD SYMBOL:



APERTURE LABEL:

LASER APERTURE

EXPLANATORY LABEL:

**LASER RADIATION AVOID DIRECT EYE EXPOSURE AND
DO NOT EXPOSE USERS OF TELESCOPIC OPTICS
CLASS 3R LASER PRODUCT**

Wavelength: 400-700 nm
Power: < 60 mW (Extended Source)



SAFETY NOTICE & WARRANTY

WARNING: INSTALLATION MUST BE CONDUCTED BY A QUALIFIED TECHNICIAN.

IMPROPER INSTALLATION CAN RESULT IN INJURY OR DEATH.

- Installation must be conducted by a qualified automotive electrician or emergency vehicle technician in accordance with the applicable NFPA standard(s) and procedures (Including but not limited to NFPA 1901, 1906, 1911, 414, 1900)
- Improperly installed, aimed, or operated lights can create significant hazard to motorists which can result in collision. Ensure light fixtures are installed and operated such that their beam does not shine into oncoming traffic
- All circuits must be fused at 125% of the rated power consumption of the loads on the circuit
- A voltage drop greater than 10% in the power feed to a fixture could be an indicator of an under-sized conductor. Use of improperly sized conductors will, at a minimum, result in poor performance, and at a maximum could result in fire
- Verify input voltage is within fixture range before installation. Voltage range information can be found in this manual or printed on the fixture body
- The use of personal protective equipment (safety glasses and gloves) is highly recommended
- Allow proper cooling time before handling the fixture if it has been installed & powered to prevent burns
- Any modifications to the fixture will void warranty and are not authorized by the manufacturer
- Always inspect the fixture for any damage prior to installing and DO NOT install if any damage is present



PLEASE READ ALL INSTRUCTIONS BEFORE INSTALLATION

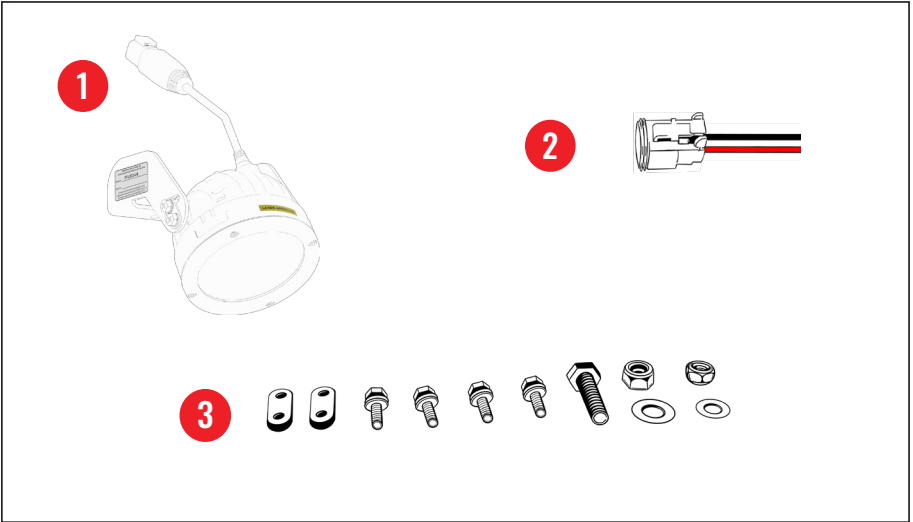


Warranty Information: Full policy available Online at www.hivizleds.com/warranty

- Proof of purchase may be required to validate warranty. All FireTech products are warranted for the useful service life of the vehicle for which they were first installed
- Improper installation, accident, physical damage, neglect, and normal wear and tear are not covered under warranty
- Lights operated in environments over 150° Fahrenheit are not covered under warranty
- All advance-exchange warranty claims must be validated with HiViz Technical Support prior to issuance of a shipping label. Failure to return defective product will result in an invoice for the full replacement value of the product
- HiViz Lighting will repair or replace defective product at its discretion. Replacement product will be in similar or better cosmetic condition than the defective part
- Warranties should be handled through the dealer/reseller the product was purchased from; customer is responsible for delivery
- If product is found to have damage not covered under warranty, customer will be responsible for return shipping charges and/or cost of repair
- Non-warranted items can be repaired at the customer's expense of parts and labor, at the discretion of HiViz LED Lighting, who will provide an estimated repair cost before proceeding with the repair



WHAT'S INCLUDED



PIECES INCLUDED

- 1 Light Fixture Assembly
- 2 DT06-2S Wiring Harness
- 3 Nuts, Bolts and Washers

TOOLS REQUIRED

- Basic Automotive Wiring Supplies
- 13mm socket or screwdriver

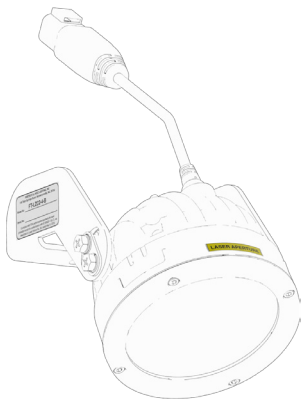
Notice:

Use of hand-tools to tighten all hardware is recommended. Use of power tools may cause permanent galling and seizure of hardware.

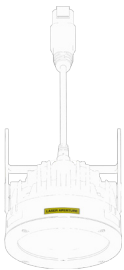


TECHNICAL SPECIFICATIONS

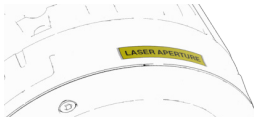
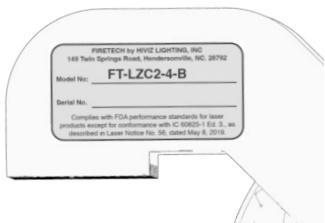
FT-WL-X-4-*



LASER	WP-PX BLUE LAKE
OPT. HOUSING COLORS	BLACK
DIMENSIONS	5.22" X 4.86" X 6.18"
BUILT-IN SWITCH	NO
WATTAGE	14W
AMP DRAW (@12V)	1.17A
INPUT VOLTAGE	9-32V DC
CONNECTOR	DEUTSCH DT04-2P



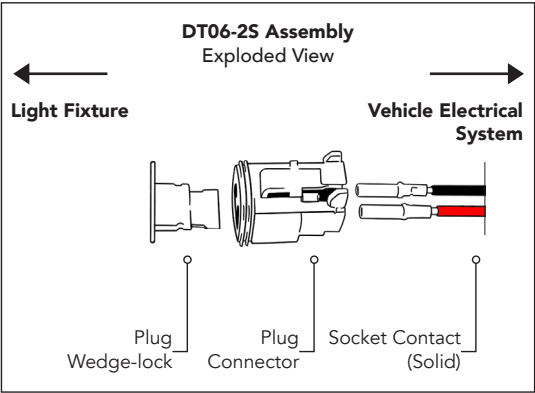
PRODUCT MARKINGS:



WIRING INFORMATION

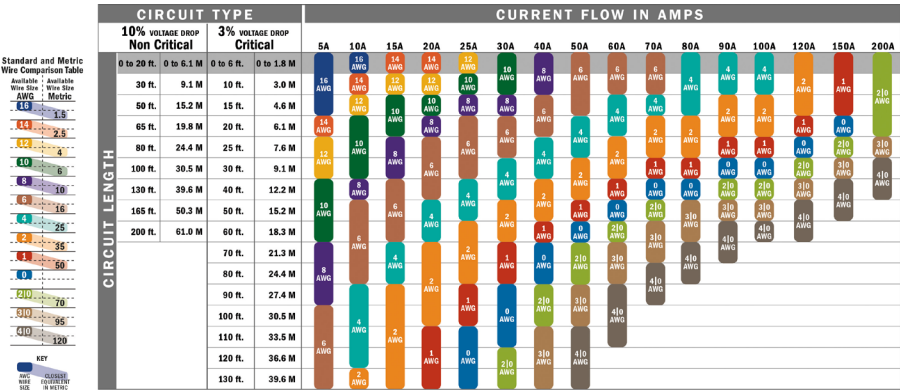
1. Wiring:

- A DT04-2P connector is included on the cable attached to the fixture. A pigtail containing the mating DT06-2S connector is included with the fixture.
- Pin 1 = Power (Red)
Pin 2= Ground (Black).
- When wiring to the apparatus, ensure the conductors are sized to carry at least 20% greater load than the calculated amperage at the minimum chassis voltage such that no greater than 10% voltage drop occurs. Fuse the circuit at the power source at a value 20% greater than the calculated load at the minimum chassis voltage. Refer to the below chart for more information.



Below, **Blue Sea Systems** has provided a chart documenting proper wire size selections for automotive applications. NFPA 1901 13.2.1.1 allows for up to 10% voltage drop on automotive fire apparatus. Please be sure to reference proper conductor size below. Visit blueseasystems.com for more information.

“Printed with permission of **Advanced System Group**”



Although this process uses information from ABYC E-11 to recommend wire size and circuit protection, it may not cover all of the unique characteristics that may exist on a boat. If you have specific questions about your installation please consult an ABYC certified installer.

© Copyright 2017 Blue Sea Systems Inc. All rights reserved. Unauthorized copying or reproduction is a violation of applicable laws.

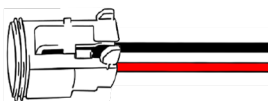


INSTALLATION INSTRUCTIONS

1. Pull apparatus out of bays
2. Set outriggers in desired "fully extended" position
3. Identify desired mounting location. Location should be as close to the intended target as practicable and aiming DOWN on the ground to indicate jack pad placement location. Avoid shining directly on reflective surfaces.
4. Check for obstructions or hidden wiring, drill mounting hole on apparatus. Consult your apparatus manufacturer for assistance choosing an acceptable mounting location.
5. Attach light fixture to apparatus using supplied hardware
6. Run electrical circuit and connect fixture. Refer to national best practices and applicable NFPA standards related to wiring.
7. Test fixture operation
8. Set final aiming of fixture and tighten all hardware

ACCESSORIES & REPLACEMENT PARTS

1. Wiring Harness
P/N: ACB2PIN200MM



Laser Cannon Video



**For additional information,
please visit hivizleds.com**

