

FRONT OF CAB†

BG2S CONFIGURATION



FILL OUT YOUR PART NUMBER HERE:

FT-BG2S - - - - -

3A. ONE COLOR LED OPT. 1. EXTRUSION 2. FIXTURE LENGTH 3B. CUSTOM COLOR OPT. 4. HOUSING COLOR 5. MARKER LIGHTS
 IF 3B IS CHOSEN: REMOVE THIS SECTION IF 3A IS CHOSEN: REMOVE THIS SECTION IF 3B IS CHOSEN: REMOVE THIS SECTION

1. CHOOSE EXTRUSION

Find your truck manufacturer and model here, then write the corresponding extrusion initial in the **BLUE SECTION** of the part number.

R2C



Pierce - Saber & Enforcer
(48"-80")

R3



Pierce - Arrow XT (48"-72")
Spartan - Metro Star (48"-72")
Spartan - Gladiator (48"-80")
Ferrara - Inferno, Igniter, Cinder, Ultra (48"-72")
Seagrave - Marauder, Capitol, Attacker (48"-80")
KME - 96" Severe Service (48"-72")
KME - Predator & Panther (48"-80")
HME Ahrens-Fox - AF1 (48"-80")

D45



E-One - Cyclone (48"-80")
E-One - Typhoon (48"-72")

R275C



Pierce - Impel & Velocity
(48"-80")

RWAR

Rosenbauer - Warrior
(60" or 80")

RAVG

Rosenbauer - Avenger
(60" or 80")

RCOM

Rosenbauer - Commander
(60" or 80")

MON

Sutphen - Monarch
(48"-80")

2. CHOOSE FIXTURE LENGTH

Choose the length fixture you want (fixtures are measured in inches) and write the number in the ***BLACK SECTION*** of the part number (refer to your make/model in section one for your fixture length options).

48" = 11 Modules



72" = 17 Modules*



80" = 19 Modules



* 3 or 5 marker light options available for select 72" fixtures
60" Custom size available for Rosenbauer Warrior, Avenger, and Commander

CUSTOM SIZES AVAILABLE

PLEASE CONTACT A FIRETECH TEAM MEMBER TO DISCUSS.



(703) 662-3458



firetech@hivizleds.com

3A. CHOOSE ONE COLOR OPT.

If you would like your entire BG2S fixture to be one color: pick your color and write it's corresponding initial in the **FIRST RED SECTION** of the part number. *Remove second red section.*

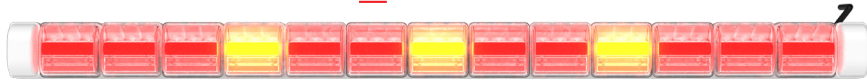
LEAVE BLANK for Amber



B for Blue



R for Red



OR

3B. CHOOSE CUSTOM COLOR OPT.

If you would like each module to be a different color: Remove the first red section and use the **SECOND RED SECTION** of the part number. In the second red section you will write the initial for the color you want from left to right for each module in the fixture (please add in Amber for marker light colors if you want marker lights, in the part number *leave off section 5*).



R B A R B A R B A R B

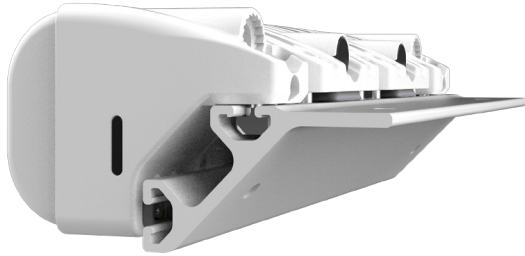
Part Number Example from BG2 Above*:

FT-BG2-D45-48-RBARBARBARB-W

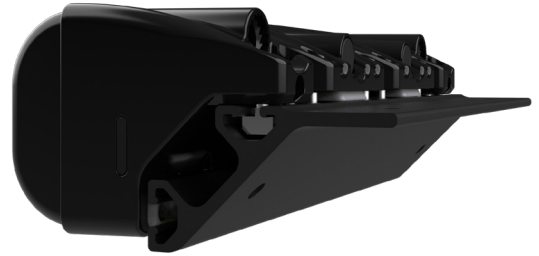
* No need to add ML or ML3 at the end of a custom color part number

4. CHOOSE HOUSING COLOR

Choose the color housing/extrusion of your fixture and write the initial in the **ORANGE SECTION** of the part number.



OR



W for White

B for Black

5. CHOOSE MARKER LIGHTS

Based on your choice in section 2 please notate if your fixture will have 3 or 5 marker lights and write the initial in the **GREEN SECTION**. If you choose to have no marker lights, *remove section from part number.*

ML3 = 3 Marker Lights



ML = 5 Marker Lights



LEAVE BLANK = No Marker Lights

