

REAR OF BODY†

BG2S CONFIGURATION



FILL OUT YOUR PART NUMBER HERE:

FT-BG2S - - - -

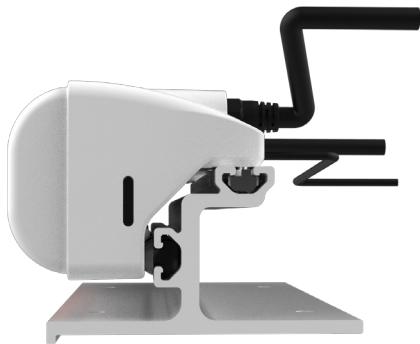
3A. ONE COLOR LED OPT. 1. EXTRUSION 2. FIXTURE LENGTH 3B. CUSTOM COLOR OPT. 4. HOUSING COLOR

IF 3B IS CHOSEN: REMOVE THIS SECTION IF 3A IS CHOSEN: REMOVE THIS SECTION

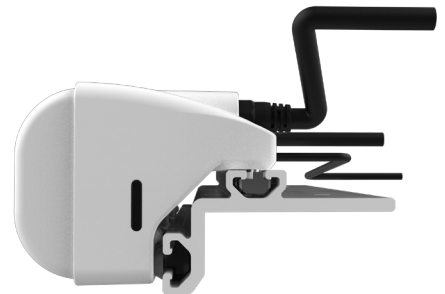
1. CHOOSE EXTRUSION

Find your truck manufacturer and model here, then write the corresponding extrusion initial in the **BLUE SECTION** of the part number.

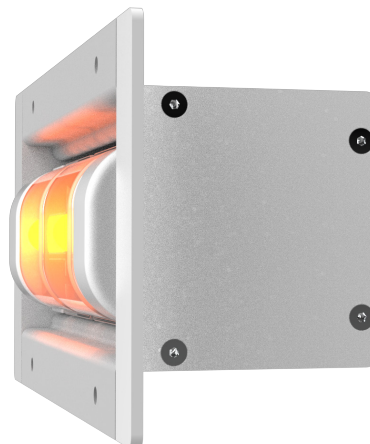
T90



D90



REC



†Configuration process varies by location

2. CHOOSE FIXTURE LENGTH

Choose the length fixture you want (fixtures are measured in inches) and write the number in the ***BLACK SECTION*** of the part number.

10" = 2 Modules



18" = 4 Modules



26" = 6 Modules



34" = 8 Modules



48" = 11 Modules



72" = 17 Modules*



80" = 19 Modules



CUSTOM SIZES AVAILABLE

PLEASE CONTACT A FIRETECH TEAM MEMBER TO DISCUSS.



(703) 662-3458



firetech@hivizleds.com

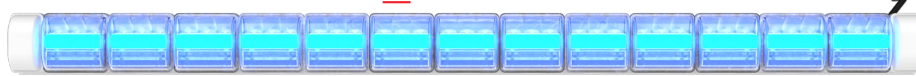
3A. CHOOSE ONE COLOR OPT.

If you would like your entire BG2S fixture to be one color: pick your color and write it's corresponding initial in the **FIRST RED SECTION** of the part number. *Remove second red section.*

LEAVE BLANK for Amber



B for Blue



R for Red



OR

3B. CHOOSE CUSTOM COLOR OPT.

If you would like each module to be a different color: Remove the first red section and use the **SECOND RED SECTION** of the part number. In the second red section you will write the initial for the color you want from left to right for each module in the fixture.



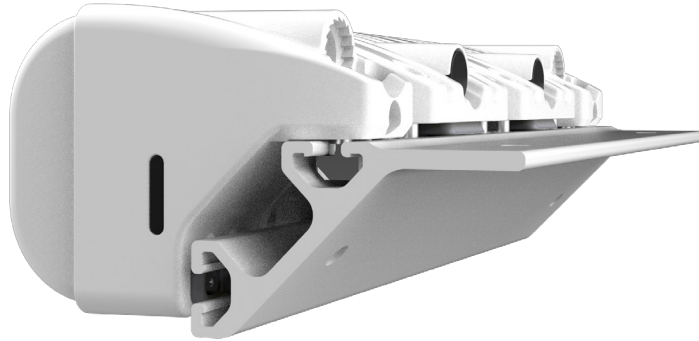
R **A** **B** **R** **A** **B** **R** **A** **B** **R** **A**

Part Number Example from BG2 Above*:

FT-BG2-D45-48-RABRABRABRA-W

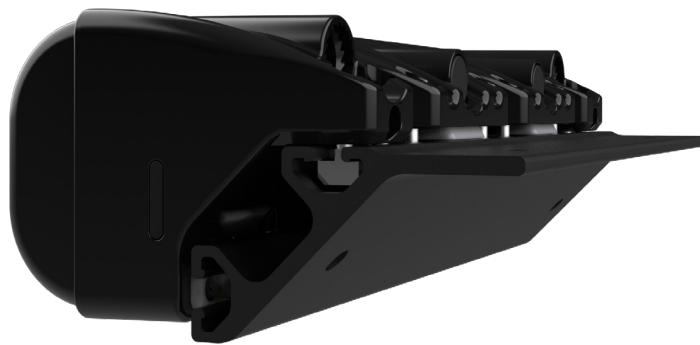
4. CHOOSE HOUSING COLOR

Choose the color housing/extrusion of your fixture and write the initial in the **ORANGE SECTION** of the part number.



W for White

OR



B for Black