

# SIDE OF BODY†

## BG2S CONFIGURATION



FILL OUT YOUR PART NUMBER HERE:

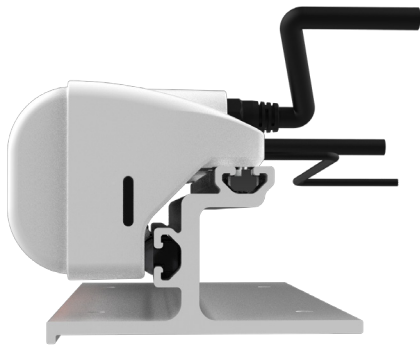
**FT-BG2S** 3A. ONE COLOR LED OPT. 1. EXTRUSION 2. FIXTURE LENGTH 3B. CUSTOM COLOR OPT. 4. HOUSING COLOR

IF 3B IS CHOSEN: REMOVE THIS SECTION

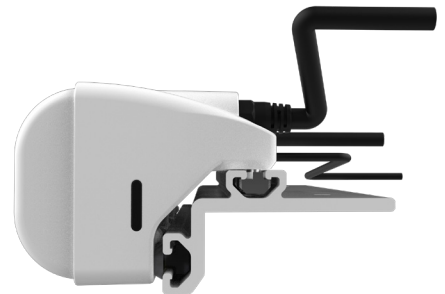
### 1. CHOOSE EXTRUSION

Find your truck manufacturer and model here, then write the corresponding extrusion initial in the **BLUE SECTION** of the part number.

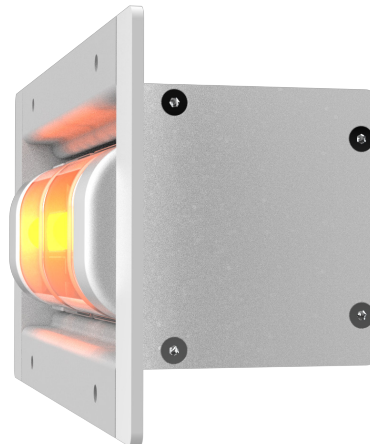
**T90**



**D90**



**REC**



†Configuration process varies by location

## 2. CHOOSE FIXTURE LENGTH

Choose the length fixture you want (fixtures are measured in inches) and write the number in the ***BLACK SECTION*** of the part number.

**10"** = 2 Modules



**18"** = 4 Modules



**26"** = 6 Modules



**34"** = 8 Modules



**48"** = 11 Modules



**72"** = 17 Modules\*



**80"** = 19 Modules



### CUSTOM SIZES AVAILABLE

PLEASE CONTACT A FIRETECH TEAM MEMBER TO DISCUSS.



(703) 662-3458



[firetech@hivizleds.com](mailto:firetech@hivizleds.com)

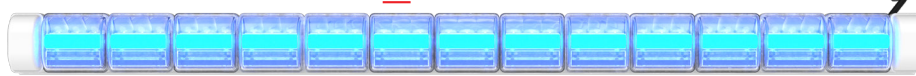
### 3A. CHOOSE ONE COLOR OPT.

If you would like your entire BG2S fixture to be one color: pick your color and write it's corresponding initial in the **FIRST RED SECTION** of the part number. *Remove second red section.*

**LEAVE BLANK** for Amber



**B** for Blue



**R** for Red



**OR**

### 3B. CHOOSE CUSTOM COLOR OPT.

If you would like each module to be a different color: Remove the first red section and use the **SECOND RED SECTION** of the part number. In the second red section you will write the initial for the color you want from left to right for each module in the fixture.



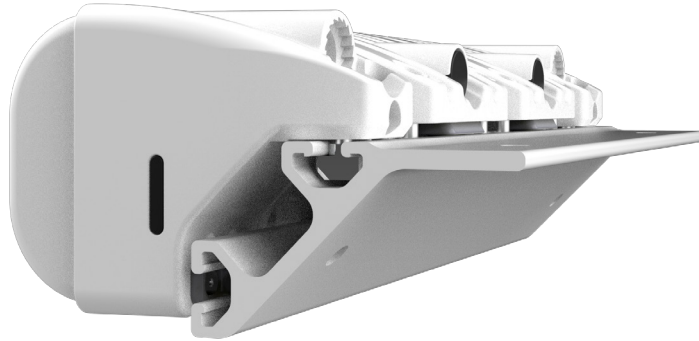
**R** **A** **B** **R** **A** **B** **R** **A** **B** **R** **A**

Part Number Example from BG2 Above\*:

**FT-BG2-D45-48-RABRABRABRA-W**

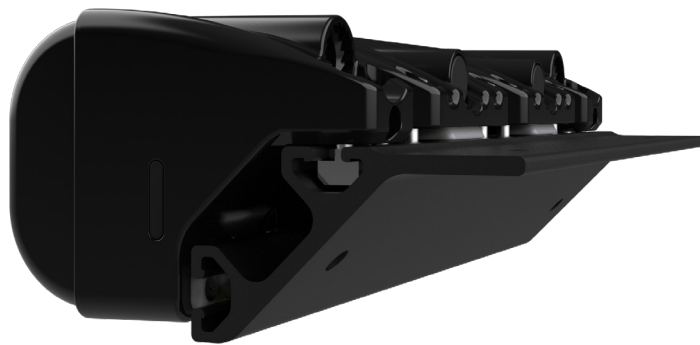
#### 4. CHOOSE HOUSING COLOR

Choose the color housing/extrusion of your fixture and write the initial in the **ORANGE SECTION** of the part number.



**W** for White

**OR**



**B** for Black