

SIDE OF CAB†

BG2S CONFIGURATION



FILL OUT YOUR PART NUMBER HERE:

FT-BG2S 3A. ONE COLOR LED OPT. 1. EXTRUSION 2. FIXTURE LENGTH 3B. CUSTOM COLOR OPT. 4. HOUSING COLOR

IF 3B IS CHOSEN: REMOVE THIS SECTION

IF 3A IS CHOSEN: REMOVE THIS SECTION

1. CHOOSE EXTRUSION

Find your truck manufacturer and model here, then write the corresponding extrusion initial in the **BLUE SECTION** of the part number.

R2C



Pierce - Saber & Enforcer (48"-80")

Sutphen - Monarch

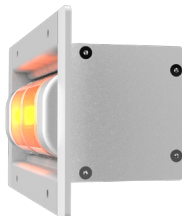
Rosenbauer - Warrior & Commander

D45



E-One - Cyclone & Typhoon

REC



R3



Spartan - Metro Star & Gladiator

Ferrara - Inferno, Igniter, Cinder, Ultra

Seagrave - Marauder, Capitol, Attacker

KME - 96" Severe Service, Predator, Panther

HME Ahrens-Fox - AF1

D90



Rosenbauer - Avenger

2. CHOOSE FIXTURE LENGTH

Choose the length fixture you want (fixtures are measured in inches) and write the number in the ***BLACK SECTION*** of the part number.

10" = 2 Modules



18" = 4 Modules



26" = 6 Modules



34" = 8 Modules



48" = 11 Modules



72" = 17 Modules*



80" = 19 Modules



CUSTOM SIZES AVAILABLE

PLEASE CONTACT A FIRETECH TEAM MEMBER TO DISCUSS.



(703) 662-3458



firetech@hivizleds.com

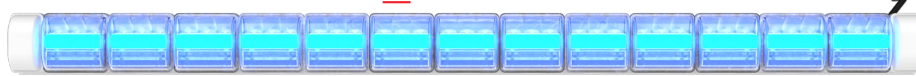
3A. CHOOSE ONE COLOR OPT.

If you would like your entire BG2S fixture to be one color: pick your color and write it's corresponding initial in the **FIRST RED SECTION** of the part number. *Remove second red section.*

LEAVE BLANK for Amber



B for Blue



R for Red



OR

3B. CHOOSE CUSTOM COLOR OPT.

If you would like each module to be a different color: Remove the first red section and use the **SECOND RED SECTION** of the part number. In the second red section you will write the initial for the color you want from left to right for each module in the fixture.



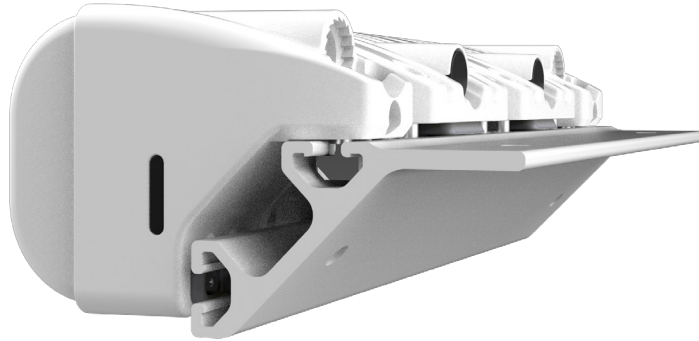
R **A** **B** **R** **A** **B** **R** **A** **B** **R** **A**

Part Number Example from BG2 Above*:

FT-BG2-D45-48-RABRABRABRA-W

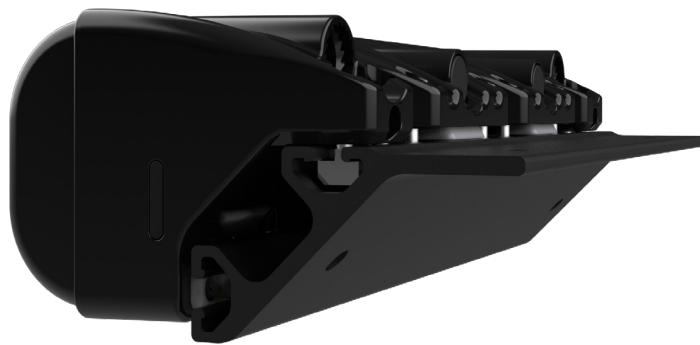
4. CHOOSE HOUSING COLOR

Choose the color housing/extrusion of your fixture and write the initial in the **ORANGE SECTION** of the part number.



W for White

OR



B for Black